



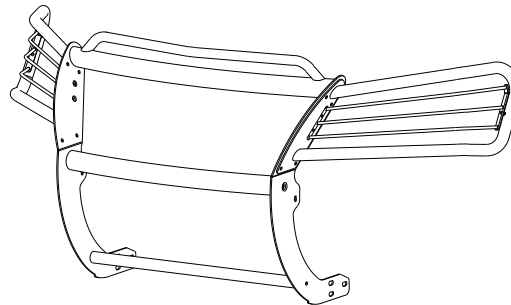
INSTALLATION INSTRUCTIONS

APPLICATION: 2003-UP HONDA PILOT

AUTOMOTIVE PRODUCTS, INC.

SPORTSMAN
ASSEMBLY

41-1325
44-1320



PARTS KIT CONTENTS

QTY	DESCRIPTION	QTY	DESCRIPTION
2	WING MOUNT ASSEMBLY	10	3/8-16 X 1.00" BUTTON HEAD BOLT
2	UPRIGHT	20	3/8" FLAT WASHER
1	HOOD BAR/TOP TUBE ASSEMBLY	4	3/8" LOCK WASHER
1	CENTER TUBE	2	3/8" INTERNAL TOOTH LOCK WASHER
1	BOTTOM TUBE	4	3/8-16" HEX NUT
2	BRACKET	8	3/8-16 NYLOCK NUT
2	SUPPORT BRACE	2	5/16" LOCK WASHER
2	1/2-13 X 2.00" HEX BOLT	2	1/4" FLAT WASHER
4	1/2-13 X 1.50" FLAT HEAD BOLT	2	M8-1.25 X 25MM HEX BOLT
6	1/2-13 X 1.25" HEX BOLT	2	10MM PUSH TYPE RETAINER
18	1/2" FLAT WASHER	2	8MM PUSH TYPE RETAINER
8	1/2" LOCK WASHER	4	2.75" OD PLASTIC WASHER
6	1/2-13" HEX NUT	2	1.625" OD PLASTIC WASHER
2	3/8-16 X 1.00" HEX BOLT	8	1.00" OD PLASTIC WASHER
4	3/8-16 X 1.25" BUTTON HEAD BOLT		

NOTE: NOT ALL FASTENERS WILL BE USED.

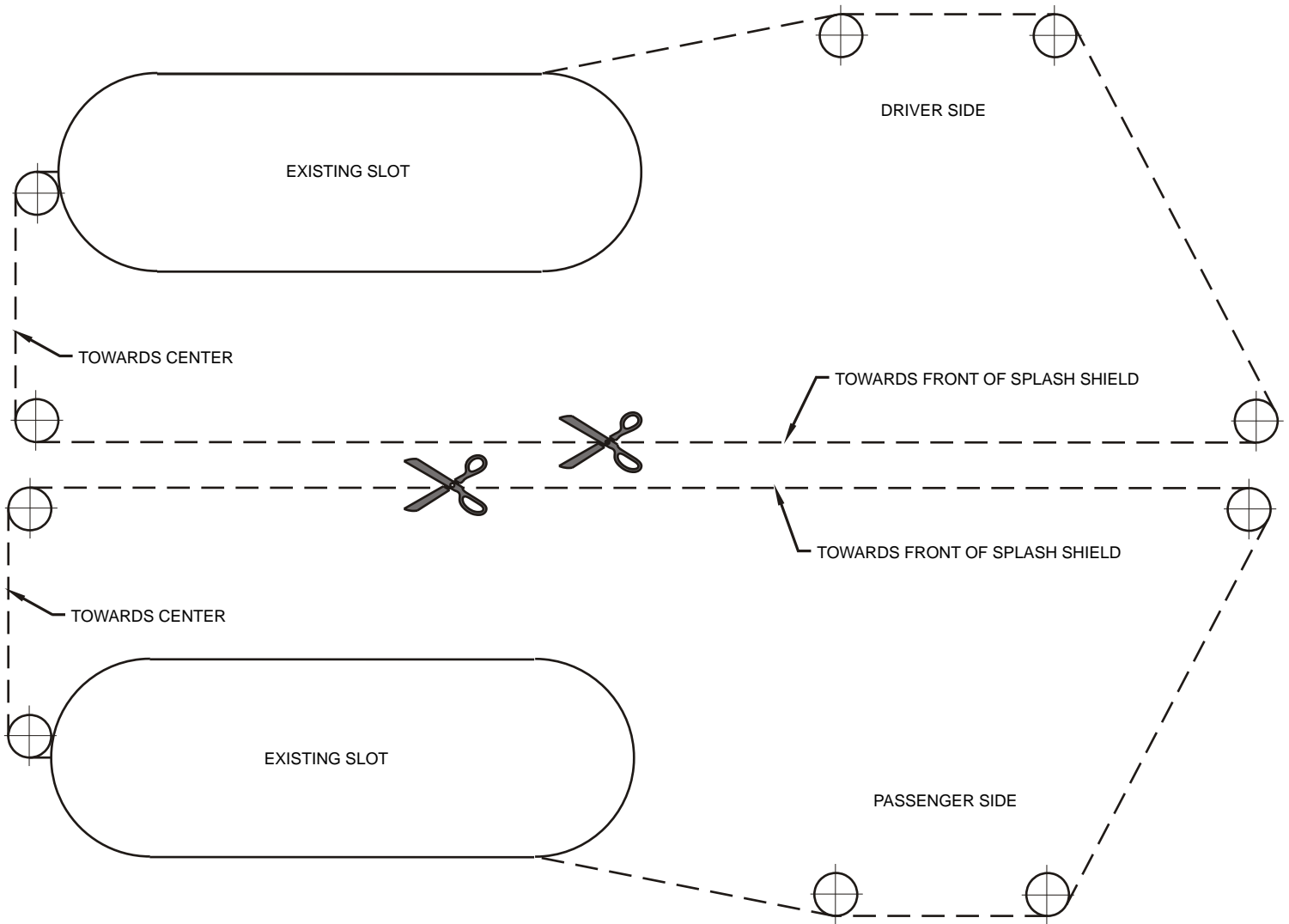
TOOLS REQUIRED

3/4" WRENCH	3/4" SOCKET	9/16" SOCKET	9/16" WRENCH
7/32" ALLEN WRENCH	5/16" ALLEN WRENCH	12MM WRENCH	14MM SOCKET
14MM WRENCH	17MM SOCKET	RATCHET	TORQUE WRENCH
KNIFE	SMALL FLAT SCREWDRIVER		UTILITY

- STEP 1. Remove the contents from the box and check for any damage. Verify all parts against the parts list.
- STEP 2. Read and understand instructions completely before beginning installation.
- STEP 3. Determine passenger and driver brackets. SEE FIGURE 1.
- STEP 4. Remove (16) push type retainers from lower splash shield. Remove plastic splash shield to gain access to mounting locations.
- STEP 5. Locate bolts that hold the frame brace and bumper brackets to vehicle. Remove bolts using a 17mm and 14mm socket and ratchet. SEE FIGURE 1.
- STEP 6. Install bracket between lower radiator support and frame brace using (2) 1/2" flat washers on top of bracket's frame brace slots and replace bolts. Install (1) 3/8-16 x 1.00" hex head bolt, (1) 3/8" lock washer and (2) 3/8" flat washers. Leave loose. SEE FIGURE 1. NOTE: It may necessary to loosen body mount bolt holding the frame brace to gain enough clearance to slide brackets in place.

CUTTING INSTRUCTIONS

The template works best is placed on top side of splash shield (the side towards the vehicle). Locate two oval slots that measure 3 3/8" x 13/16". Cut out template and place over appropriate slots. Hold in place using masking tape. Drill 1/4" holes at each of the small circles. Cut splash shield from each drilled hole to drilled hole. It may be necessary to use a straight edge to ensure a straight cut.



-
- STEP 7. Locate top mount brace bolts. These are accessed from front of vehicle through center opening of bumper. With a 12mm wrench, remove bolt towards inside of frame rail. NOTE: This bolt will be replaced with the longer one supplied in bolt kit. SEE FIGURE 2.
- STEP 8. Determine passenger and driver support braces and install through bumper opening. Attach braces to frame rail where bolt was previously removed in Step 7 as shown. Leave loose. SEE FIGURE 2.
- STEP 9. Determine passenger and driver uprights, hood bar/top tube assembly, center tube and bottom tube. NOTE: Uprights are positioned so raised side of bolt holes are facing each other. SEE FIGURE 3.
- STEP 10. Attach uprights to hood bar/top tube assembly, center tube and bottom tube using (4) 1/2-13 x 1.50" stainless steel flat head bolts, (2) 2.75" plastic washers, (2) 3/8-16 x 1.00" stainless steel button head cap screws, (2) 3/8" stainless steel internal tooth lock washers and (2) 1.625" plastic washers. Level tubes and torque 1/2" fasteners to 60 FT.LBS. and 3/8" fasteners to 30 FT.LBS.
- STEP 11. Determine passenger and driver wing assemblies. Install driver side wing assembly using (4) 3/8-16 x 1.00" stainless steel button head cap screws, (8) 3/8" stainless steel flat washers, (4) 3/8-16 stainless steel nylock nuts and 1.00" plastic washers. Tighten and torque to 35 FT.LBS. Repeat for opposite side.
- STEP 12. Lay Sportsman face down in front of vehicle and attach to bottom bracket using (1) 1/2" hex head bolt and (2) washers per side. Leave loose. Rotate Sportsman to vehicle and install remaining hardware in bottom brackets. Fasten top brace to uprights using 3/8" stainless steel fasteners as shown. SEE FIGURE 1.
- STEP 13. Level and center as desired. Tighten and torque bottom brackets as follows: 12mm fasteners to 61 FT.LBS;

10mm fasteners to 35 FT.LBS. and 3/8" fasteners to 30 FT.LBS. Torque 8mm brace fasteners to 26 FT.LBS.

- STEP 14. Remove Sportsman from vehicle by removing 1/2" bottom bracket fasteners and two 3/8" fasteners holding the top braces to uprights.
- STEP 15. Cut plastic splash shield to allow brackets to pass through. See cutting reference attached to instruction sheet for guidelines on cutting. Reinstall plastic splash shield over brackets in the same order removed.
- STEP 16. Reattach Sportsman to vehicle per STEP 9. Torque 1/2" fasteners to 65 FT.LBS. and 3/8" fasteners to 30 FT.LBS.

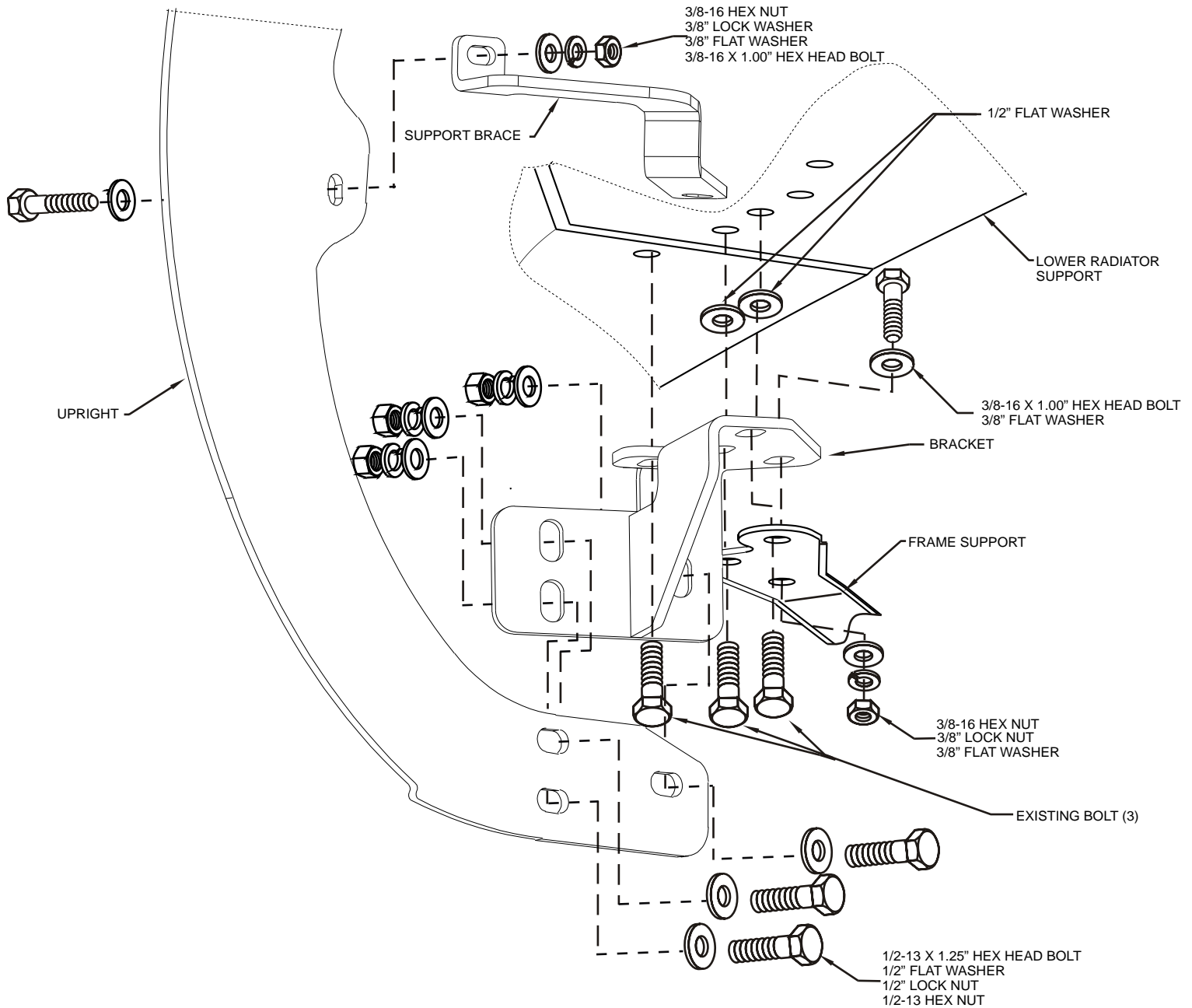
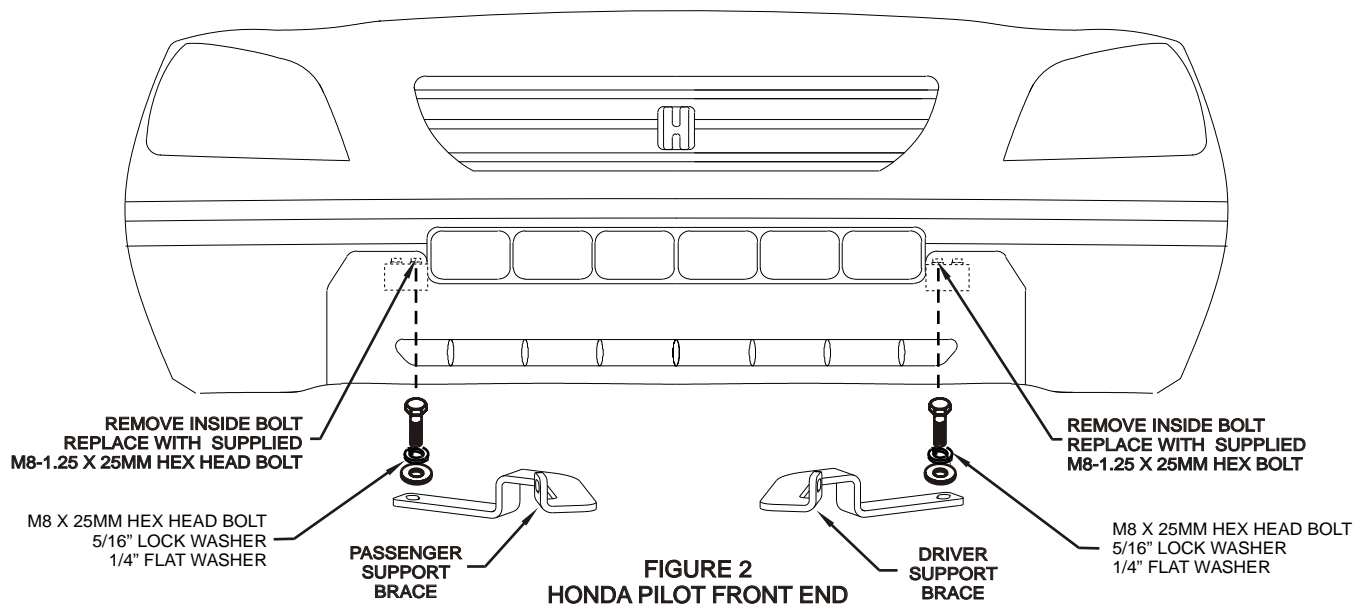
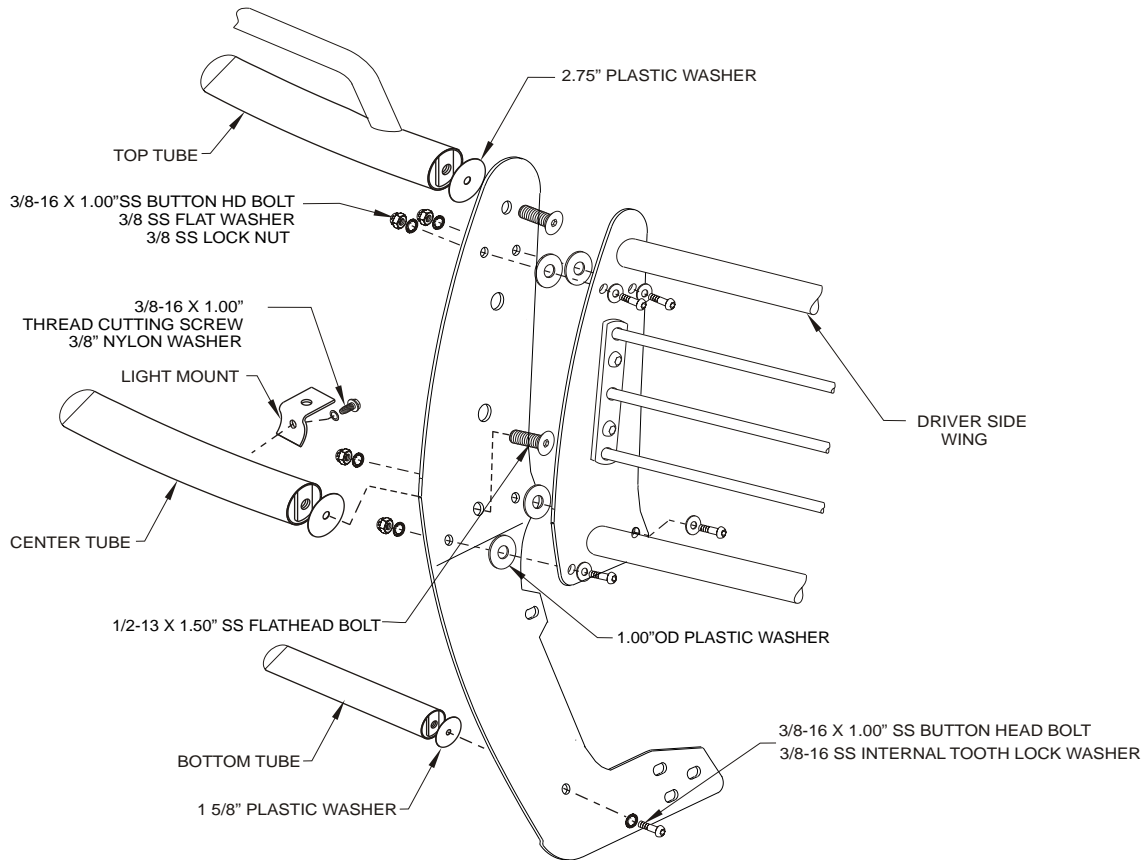


FIGURE 1
INSTALLATION VIEW OF PASSENGER SIDE SHOWN, DRIVER SIDE OPPOSITE



**FIGURE 2
HONDA PILOT FRONT END**



**FIGURE 3
INSTALLATION VIEW OF DRIVER SIDE, PASSENGER SIDE OPPOSITE**

Finish protection - Westin products have a high quality finish that must be cared for like any other exposed finish on the vehicle. Protect the finish with a non-abrasive automotive wax (pure carnauba, for example) on a regular basis. The use of cleaner wax or any compound which contains an abrasive is detrimental, as the compounds scratch the finish and open it to corrosion.



Westin Automotive Products, Inc.
5200 N. Irwindale Ave. Suite 220
Irwindale, Ca. 91706

Thank You for choosing Westin products
For additional installation assistance please call
Customer service (800) 793-7846 or (507) 375-3559